

A project by



Rudraksh
Kasturi

Indulge in a Grand Living





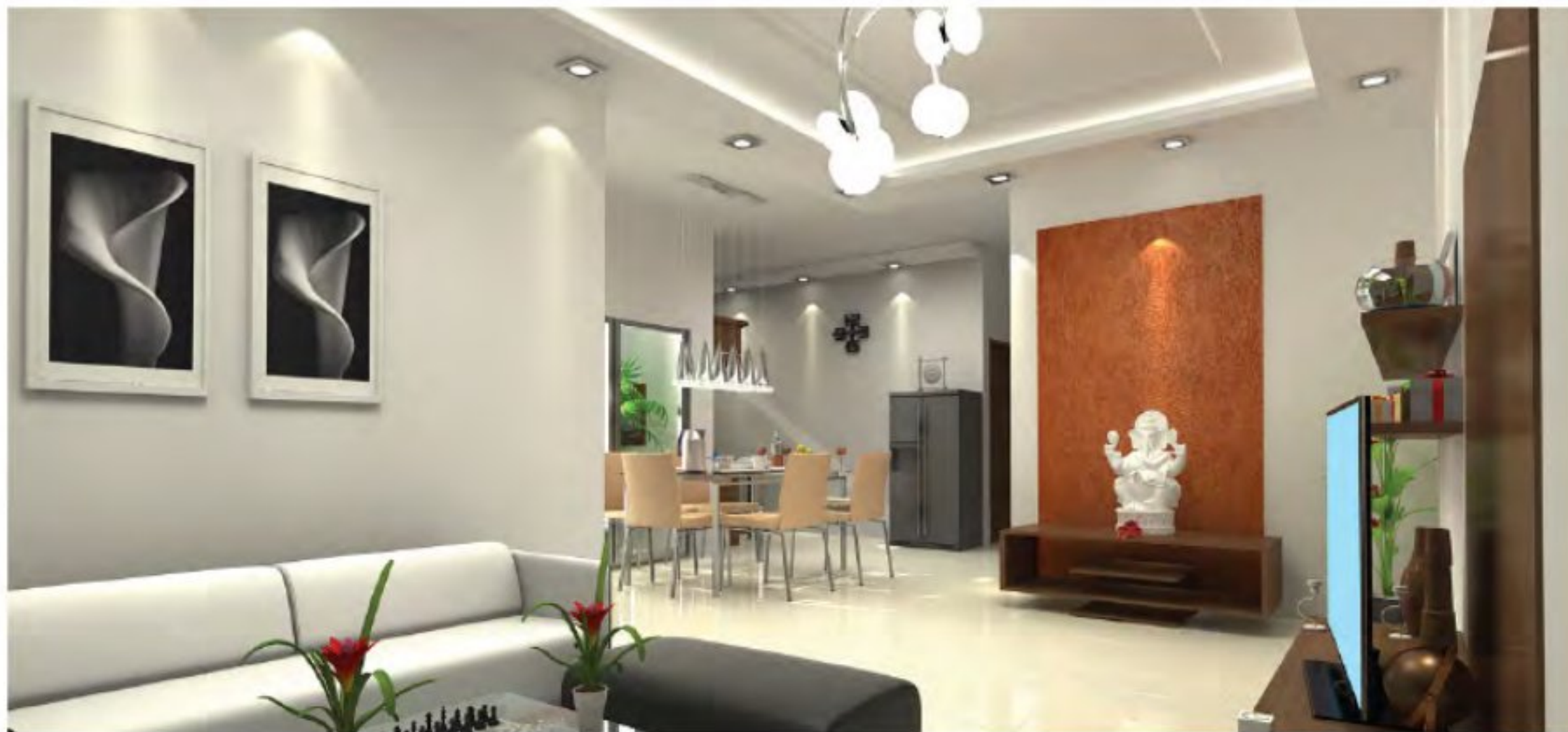
Elegantly Designed 2/3 BHK Grand Apartments

Welcome to the abode of grand living at Rudraksh Kasturi. The homes are made for those who relish the finer things in life. It spans everything from neat and elegant architecture and spacious rooms to extraordinary amenities. Cast an eye on Rudraksh

Kasturi and you will see a magnificent lifestyle.

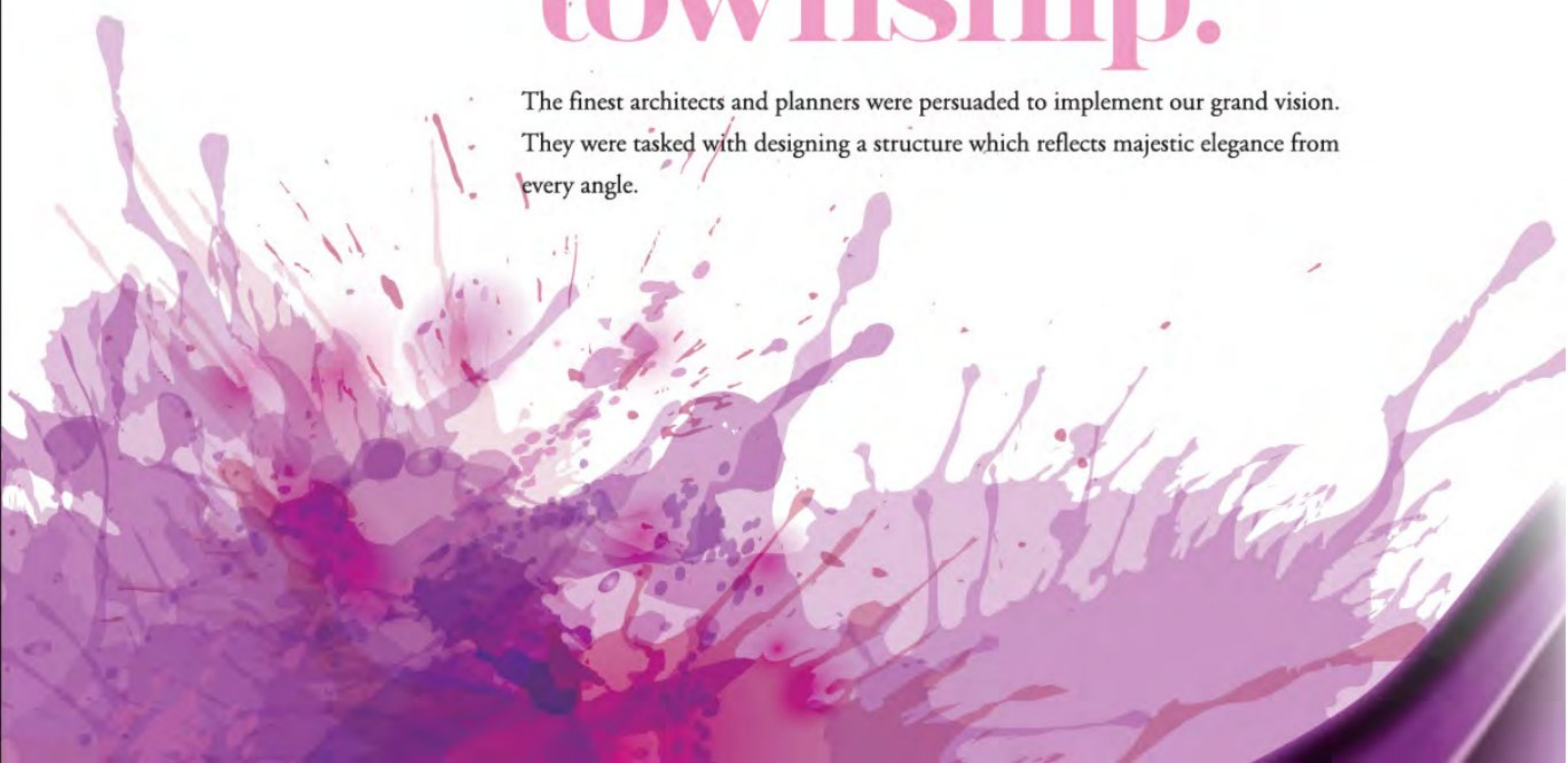
Located at the prime location of Hoshangabad Road, RK offers easy access and proximity to educational institutes, hospitals, malls etc. Awe-inspiring architecture with seamlessly designed interior makes Rudraksh Kasturi a truly desired place to live.





Rudraksh Kasturi: More than just a township!

The finest architects and planners were persuaded to implement our grand vision. They were tasked with designing a structure which reflects majestic elegance from every angle.







Embrace a Spacious Luxury!

Why to look for a confined living room, small bedrooms, cramped kitchen and tiny washrooms when you can have a huge living room, enormous bedrooms, large kitchen and spacious washrooms? The spacious luxury of Rudraksh Kasturi can inspire anyone to live a life in a boundless freedom.





Spectacular Architecture: A grand feast for the eyes!

Experience the amazing visual art at Rudrash Kasturi where buildings speak for themselves with incredible architecture. The design is simply the outcome of giving our world-class architects absolute freedom while creating it. The amazing view of Rudrash Kasturi will surely leave a lasting impression on your guests.





**“Light, God’s
eldest daughter,
is a principal
beauty in a
building”**

Thomas Fuller...

At Rudraskh Kasturi, we designed your home for maximum sun light. It will not only bring out the beauty of fabrics and furniture but will also give an instant boost to your mood and your immune system.







Grand Amenities: Your kids would not like to go out on weekends!

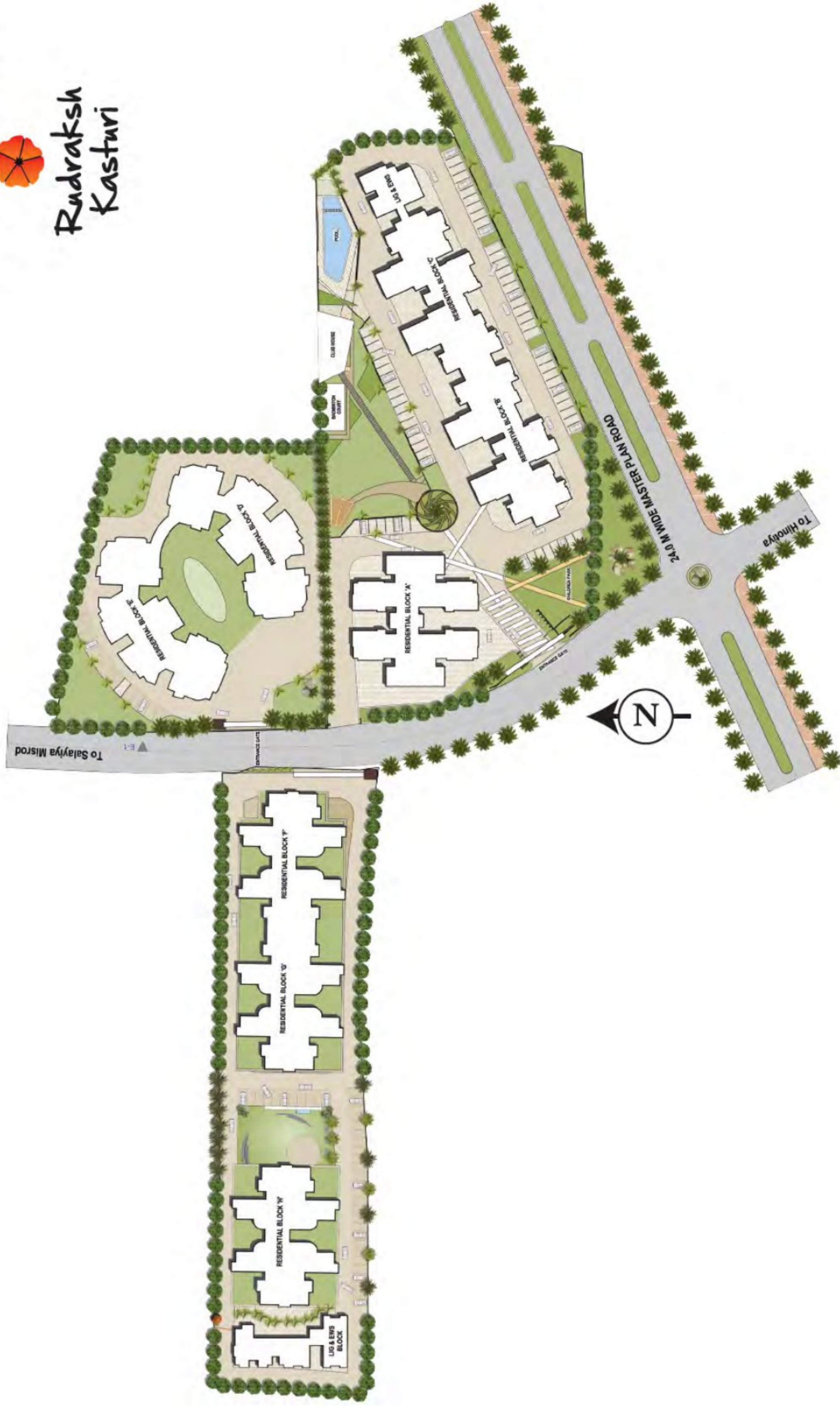
Rudraksh Kasturi is a stunning example of how finesse and aesthetic beauty can be combined with top-notch amenities. From state-of-the-art club house, children's play areas at Rudraksh, you experience high quality of life.

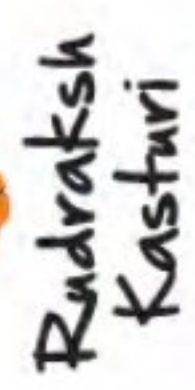
Clubhouse with multi-equipment Gym and Indoor games
Swimming Pool
Badminton Court
Game Zone for Children
Beautiful Landscaped Garden and Open Space
Power Back-up

Grand View of

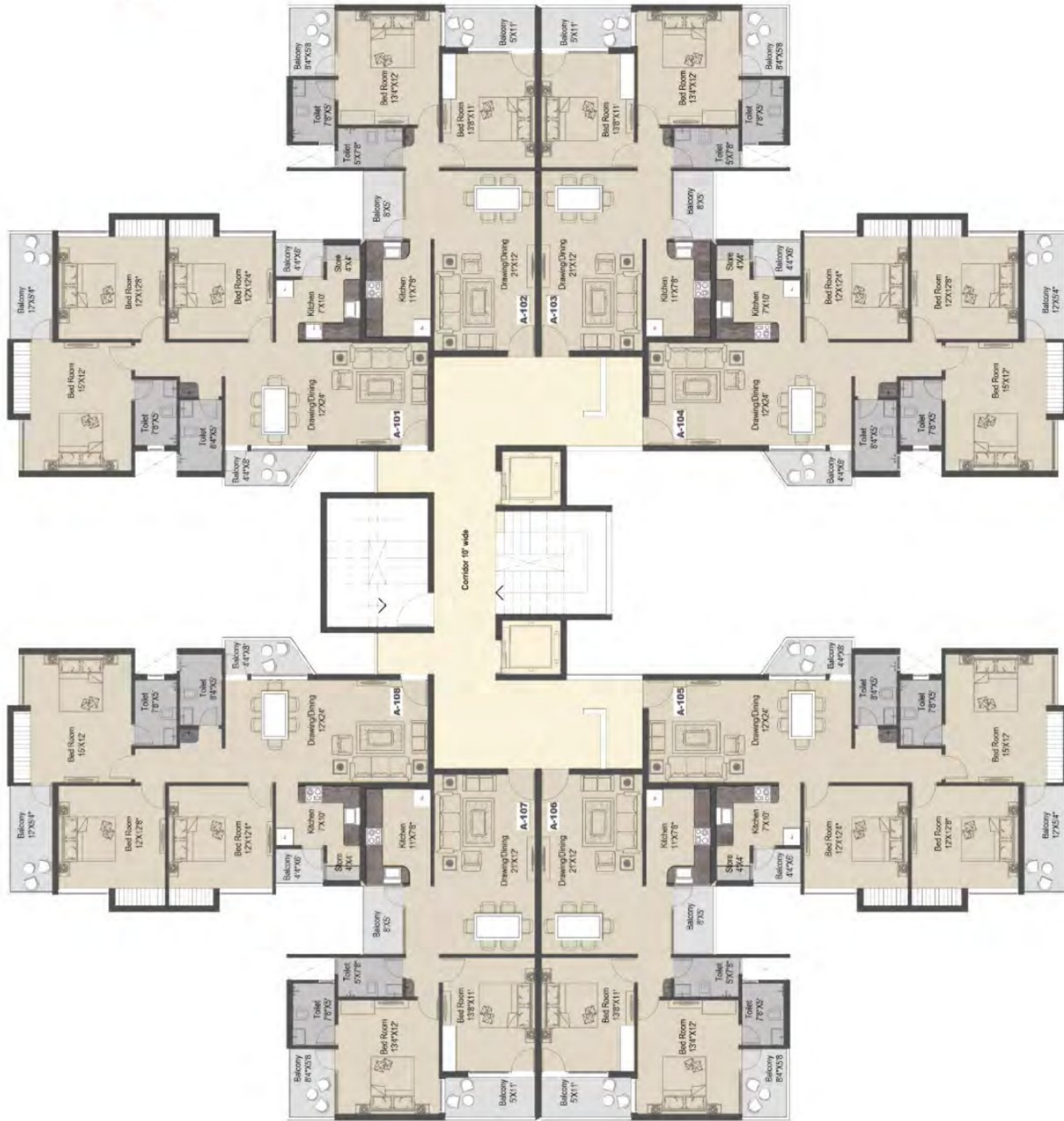


Rudraksh
Kasturi





**TOWER - A (2/3-BHK)
TYPICAL FLOOR PLAN**





Rudraksh
Kasturi

TOWER B (3-BHK) TYPICAL FLOOR PLAN





Rudraksh
Kasturi

(3-BHK) - C (3-BHK)
TYPICAL FLOOR PLAN





About *Nirvana* LIFESPACES

Nirvana is a place of perfect peace and happiness. At Nirvana, we are committed to create benchmarked projects in terms of quality, architecture, price, customer satisfaction and happiness. With the launch of our first project 'Rudraksh Kasturi', we are all set to create a project par excellence in Central India.

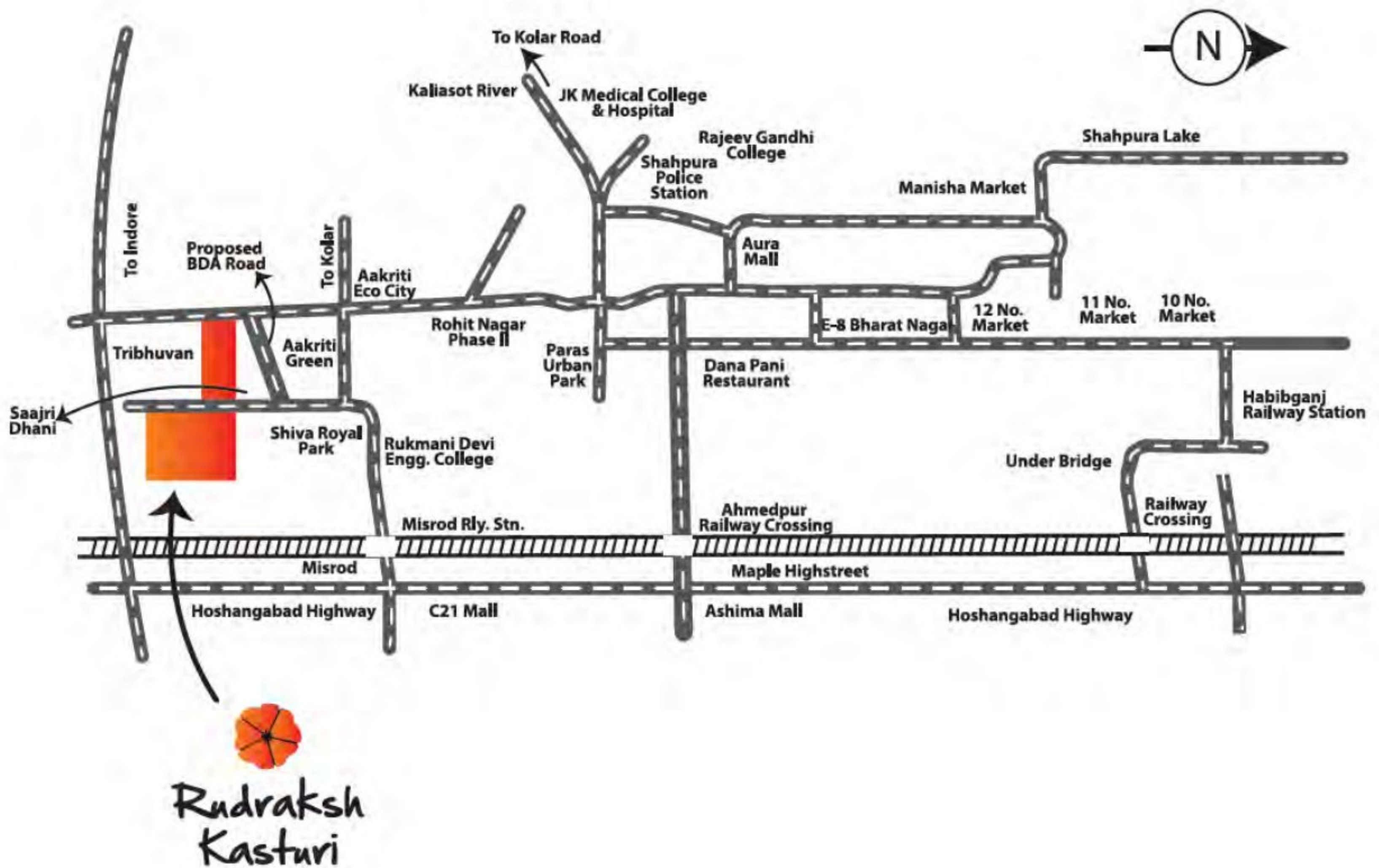




Specifications

Structure	:	Earthquake resistant RCC framed structure.
Wall	:	Gohlbrick masonry/aerated autoclaved concrete (AAC) Block.
Doors	:	(A) Frames – wooden/granite stone/steel with provision for fly mesh shutter on outer frames. (b) Laminated/Moulded panel doors with S.S premium hardware fitting.
Windows	:	UPVC/Powder coated three track sliding aluminium glass windows with mosquito nets & M.S security grills.
Flooring	:	(a) Vitrified tiles in bedrooms, lounge, drawing room, kitchen, living area. (b) Anti skid tiles in verandah, covered sit out & open terrace.
Kitchen	:	(a) Granite kitchen platform with S.S sink & designer tiles dado 2' ht.
Toilet	:	(a) Premium designer tiles up to 7' ht. (b) Two European W/C. (c) Counter wash basin.
Plumbing	:	Jaquar or equivalent brand C.P fitting with hot & cold mixer in wash basins.
Sanitary	:	Hindware/Johnson or equivalent elegant sanitary ware in pastel color.
Electrification	:	(a) Branded modular electrical fittings and circuits security MCB's. (b) Wiring – all electrical wiring in concealed conduits, fire resistant coper wires.
Water Supply	:	Concealed PPR/CPVC pipelines with individual 1000 ltr overhead tank or common tank supply through common tube well/overhead tank.
Water Conservation:		The Project is equipped with sewage treatment plant (STP) & wastewater treatment plant (WWTP).
Wall Finish	:	Internal – surface including ceiling shall be painted in pleasing colors of acrylic emulsion paints. External – wall surface with exclusive exterior weather proof paint.
Pop Staircase	:	Elegant plaster of paris cornice in all bedrooms & living areas. (a) Granite stone steps on staircase. (b) Attractive stainless steel staircase railing.
T.V/Tel. Points	:	T.V./Telephone connectin point with provision for cable network in drawing room, lounge & all bedrooms.
Utility Points	:	Provision for micro wave, fridge, electric mixer power point & inverter point.
Water Harvesting	:	Provision also available.

Location Plan



Promoters & Developers


Nirvaña
LIFESPACES

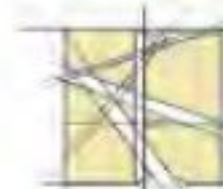
Office : 125, Lower Ground Floor, Laxmi Plaza, Zone-II,
 M.P. Nagar, Bhopal-462011, Ph.: 0755 4223 837
 Email : nirvanalifespaces@yahoo.com

Site : In front of Tribhuvan, Behind Aakriti Green
 Village : Saliya, Bhopal
 Mob : +91-7771033363/64

Joint Venture Partner


KASTURI & KUNWARJI
 COLONIZERS & DEVELOPERS PVT. LTD.

Architect:



Kushwan and Kushwan
 Architecture, Planning & Interior Design
 B-195, Shahpura Bypass,
 Ph. (755) 4049400/444 Fax. (755) 4049411
 Kushwan@kushwanuppl.com

DISCLAIMER - In the interest of the continual developments in design and quality of construction, the Developer reserves all rights to make any changes in the scheme, including technical specifications, designs, planning and layout in any stage and all the purchasers shall abide by such changes. -Changes/alterations of any nature, including the elevations, exterior colour scheme of the apartments or any other change affecting the overall design concept & outlook of the scheme are strictly NOT PERMITTED during or after the completion of the scheme. -The brochure is intended only to convey the essential design and technical features of the scheme and shall not be construed to form part of the legal document.