



**Rudraksh
Kasturi**
PHASE-II

AVOBR 900979796

Promoters & Developers



Rudraksh Kasturi Phase-II, Adjoining Shiva Royal,
Near Aakriti Greens & Tribhuvan, Village Saliya, Bhopal
Mob : +91-7771033363/67

Architect



kushwah and kushwah
Architecture Planning & Interior Design

B-293 Shahpura, Bhopal
Ph: 0755-404900, 444 Mo. 9039467944
mail@kushwahandkushwah.com

RERA REG.NO.
P-BPL-24-4557

DISCLAIMER ** The photographs/imagery used in the brochure are indicative, artistic impression, renditions of the proposed development and for representation purpose only. Photographs of interiors, surrounding views and location may have been digitally enhanced or altered and do not represent actual views or surrounding views. The Designs, dimensions, facilities, plans, images, specifications, furniture, additional fittings/ fixtures, decorative items, including finishing materials, specifications and other details shown in the images are only indicative in nature and are only for the purpose of illustrating a possible layout and do not form part of the standard specification/services to be provided in the project and the said information will do not be construed as an advertisement. This brochure will not be challengeable at any court. The customer is advised to verify project and property offerings at site before purchase.





Nirvana Lifespaces presents the idea of beauty and modernity of life. We understand your needs & expectations, and offer you a good living with modern style.

Rudraksh Kasturi Phase-II is a fully enclosed, beautifully landscaped campus spread over 4.67 acres. This is the second phase of the 1.45-acre project. It is located in Salaiya, the fastest-developing area of Bhopal. Well-flourished gardens begin at the entrance to **Rudraksh Kasturi** Phase-II, which ensures a pollution-free environment. Your 'dream home' is being created with all the basic and modern facilities so as to ensure that you will enjoy a clean, healthy, and modern lifestyle. Come reside in an abode that facilitates galore and makes you feel like living in a perpetual paradise.

*Introducing
A life you've aspired*



Every home is constructed first in the mind. It is your tiniest needs, varied desires, and imagination that give your home its first form. And at **Rudraksh Kasturi** Phase-II, we have ensured that the real home is even better than what you had visualised. We bring you a home that has well-thought-out features and designs that focus on optimising space and quality construction. A home that is sure to exceed your expectations and give you all the joys and utility you desire. With 78 units of 3BHK houses and 12 units of LIG/EWS, **Rudraksh Kasturi** Phase-II creates an ideal community living experience. It also enjoys a very strategic location, as it is coming up in one of the most promising locations in the newly developed Salaiya, South Bhopal.



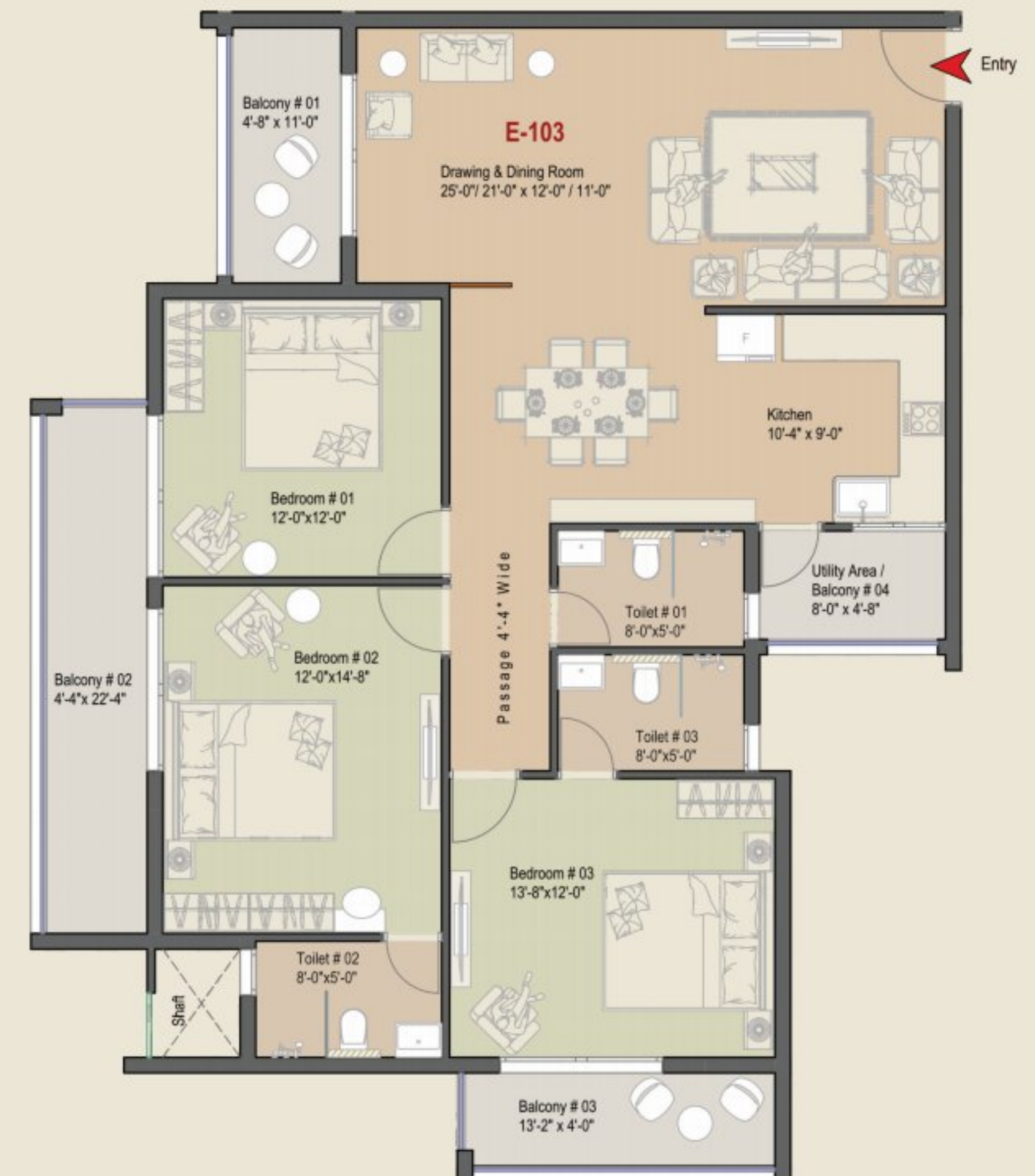
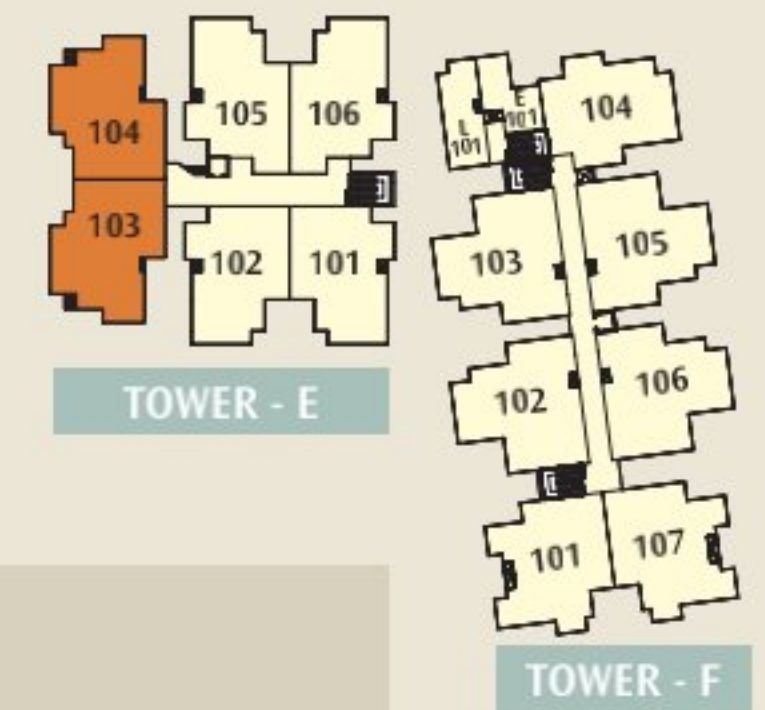
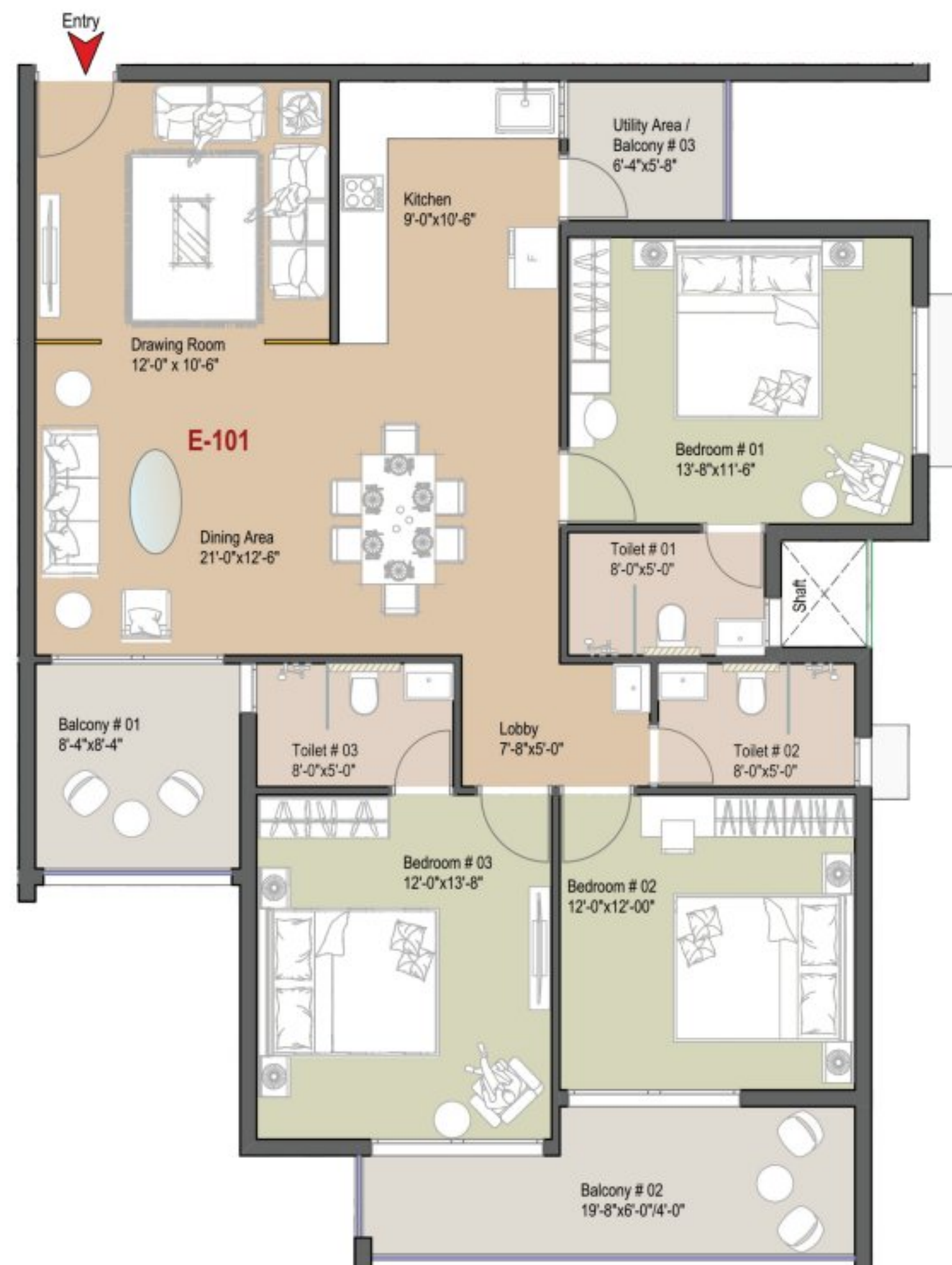
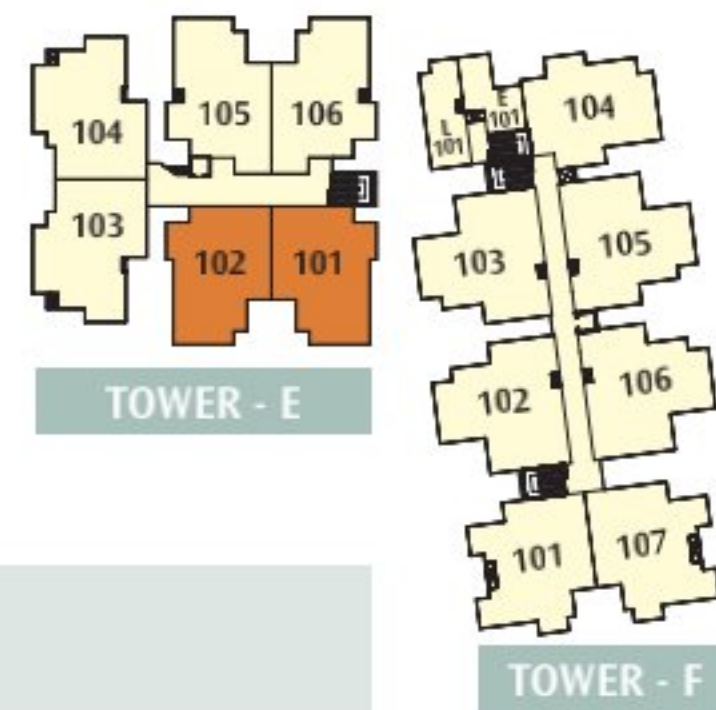
*Minimalist Design.
Maximal Living.*

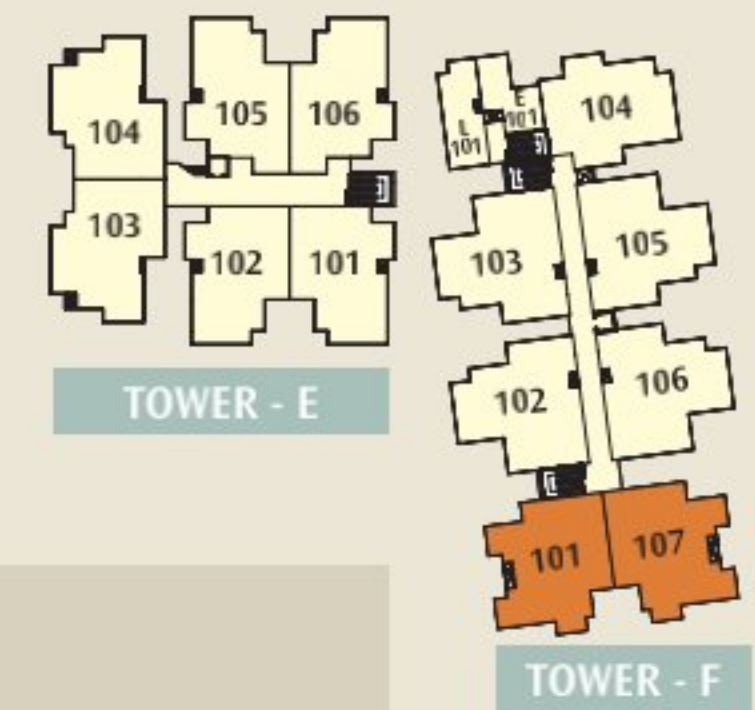
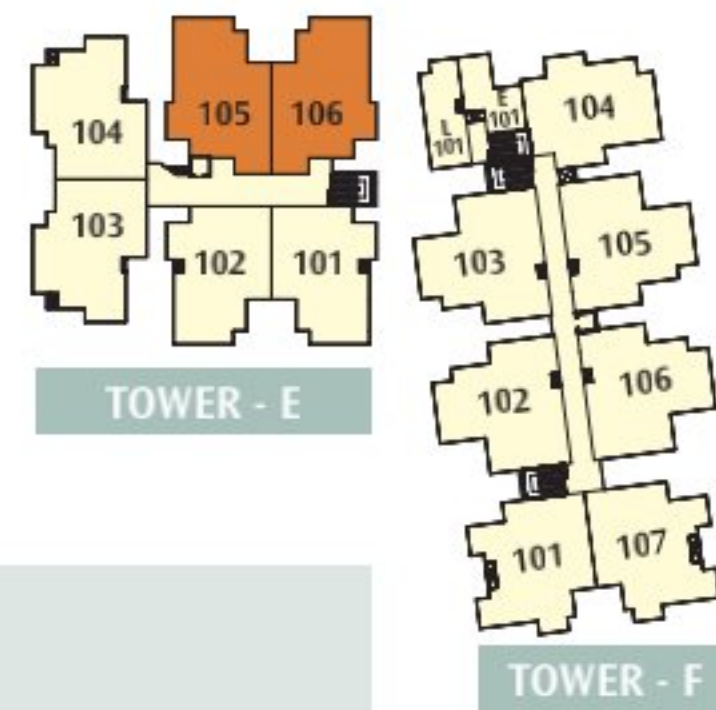


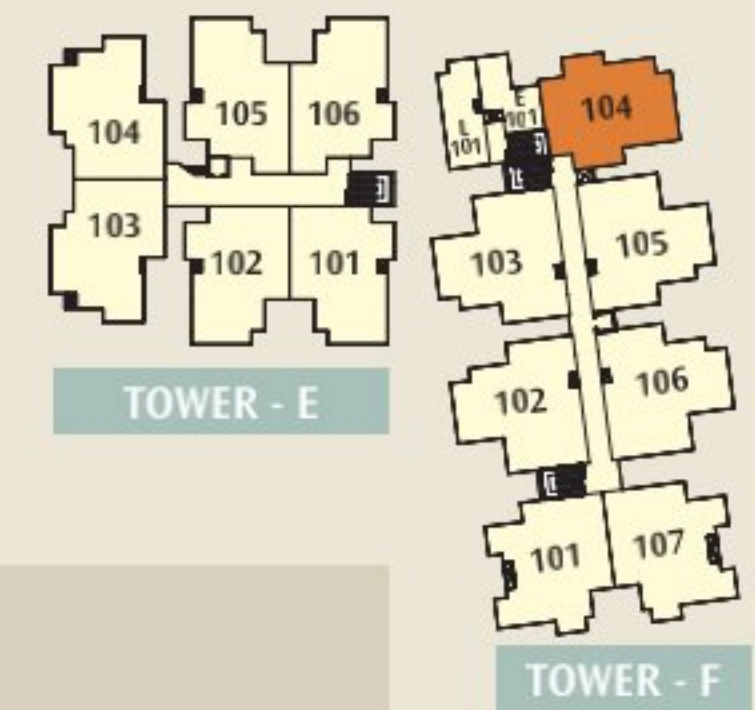
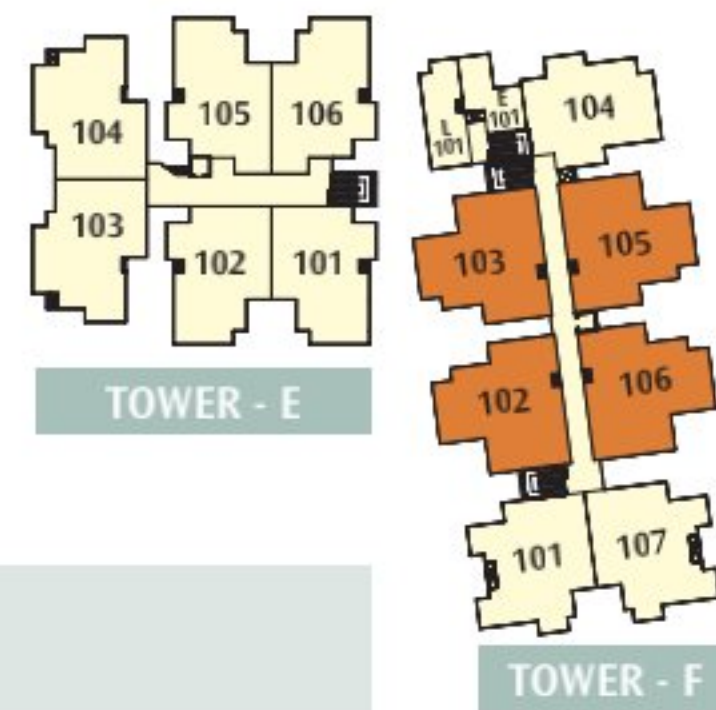
Rudraksh Kasturi Phase-II is truly a one-of-a-kind opportunity for you to reside in an elite community. Experience the best of both worlds: the bounty of nature and the modern conveniences of the city. **Rudraksh Kasturi** Phase-II fosters an active and healthy lifestyle by providing you with an array of facilities to engage in sports and physical activities of your choice. **Rudraksh Kasturi** Phase-II is also a stunning example of how finesse and aesthetic beauty can be combined with top-notch amenities. With the beautiful garden and children's play areas at Rudraksh, you experience a high quality of life.

*The privilege life to
rejuvenate and relax*











brings not just homes but an opportunity to lead
a better life with host of amenities within.



Site Plan

About Builders

Nirvana is a place of perfect peace and happiness. At **Nirvana**, we are committed to create benchmarked projects in terms of quality, architecture, price, customer satisfaction and happiness. With the launch of our **Rudraksh Kasturi** Phase-II project, we are all set to create a project par excellence in Central India.

Nirvana Lifestyle aims to provide a fully integrated construction and real estate solutions to all real estate needs of our customers - Residential, commercial and land. We thrive to meet changing needs of our clients with our quality services and build long-term relationships based on integrity, performance, values and client satisfaction.

